



THE LITTLE THEATRE OF THE ROCKIES

COLORADO STATE
COLLEGE OF EDUCATION
GREELEY, COLORADO

THE LITTLE THEATRE OF THE ROCKIES

Presents

GOOD-BYE, MY FANCY

a comedy by
FAY KANIN

MISS HELEN LANGWORTHY, Director
WELBY WOLFE, Technical Director

THE CAST

(In order of their first appearance)

GINNY MERRILL	- - - - -	Betty Powell
AMELIA	- - - - -	- Pat Junkin
CLARISSE	- - - - -	- Lois Holeman
MARY NELL	- - - - -	- Terry Forrest
MISS SCHACKLEFORD	- - - - -	- Willine Stiles
JANITORS	- - - - -	James Drommond, Roger Lindroth
TELEPHONE MAN	- - - - -	- Curtis Lundberg
SUSAN	- - - - -	- Roberta Hollander
GRACE WOODS	- - - - -	- Martha Everds
AGATHA REED	- - - - -	- Kay Perry
ELLEN GRISWOLD	- - - - -	- Lyla Lee Hudson
PROFESSOR BIRDSEAW	- - - - -	- Dorothy Varra
CAROL	- - - - -	- Jorice Jacobs
JO	- - - - -	- Nancy Berardi
DR. PITT	- - - - -	- Richard Riley
JAMES MERRILL	- - - - -	- William Steerman
PROFESSOR DINGLEY	- - - - -	- Robert Carpenter
MATT COLE	- - - - -	- Jack Schlaefle
CLAUDE GRISWOLD	- - - - -	- Harry Woodworth

SCENE OF THE PLAY

The entire action of the play takes place over Commencement weekend in early June, 1948, in the dormitory of Good Hope College for Women.

ACT I

Scene 1: Friday morning

Ten Minutes Intermission

ACT II

Scene 1: Saturday afternoon

Scene 2: Saturday evening

Ten Minutes Intermission

ACT III

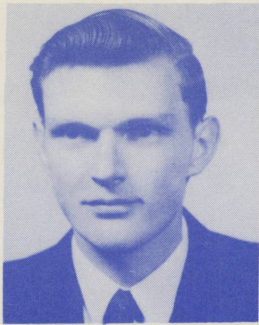
Scene 1: Sunday afternoon

The setting for GOOD-BYE, MY FANCY was designed by Welby Wolfe.

The score of the music for the Good Hope College Alma Mater was composed by Martha Everds.

Pictures of Kay Perry, William Steerman, Betty Powell, Martha Everds, and Willine Stiles are by Jerry Tammany. Lyla Lee Hudson by Nash Studio.

The Little Theatre of the Rockies will present AH, WILDERNESS by Eugene O'Neill, April 25-26.



Jack Schlaefle



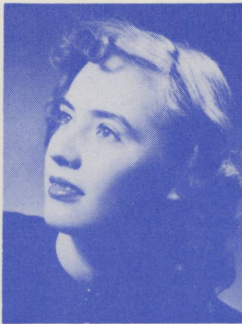
Kay Perry



William Steerman



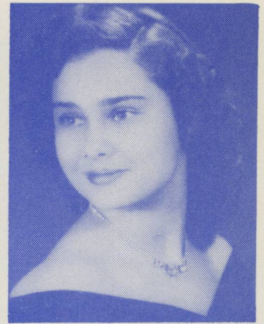
Martha Everds



Betty Powell



Willine Stiles



Lyla Lee Hudson

TECHNICAL CREWS

ASSISTANT DIRECTOR	- - - - -	Jane Tewksbury
STAGE MANAGER	- - - - -	Ellsworth Haas
SCENIC ARTIST	- - - - -	Shirley Schrader
ASSISTANTS	- - - - -	James Smith, Shirley George, Loretta Fritzer
STAGE CARPENTER	- - - - -	Warren Fay
ASSISTANTS	- - - - -	Art Danielson, Ellsworth Haas, Eugene Diggs
BUILDING CARPENTER	- - - - -	Robert Carpenter
ASSISTANTS	- - - - -	Charles Howard, Hilma Schroeder, Irene Plagman
PROPERTY MISTRESS	- - - - -	Alma Sup
ASSISTANTS	- - - - -	Shirley DePorter, Elvina Fritzier, Jim Drommond
COSTUMES	- - - - -	Joan Bailey and Dick Mowry
ASSISTANTS	- - - - -	Marilyn Hamilton, Elaine Zimmerman
ELECTRICIAN	- - - - -	Robert Card
ASSISTANT	- - - - -	Treva Lewis
PUBLICITY	- - - - -	Roger Lindroth
ASSISTANTS	- - - - -	Knute Skinner, Jane Ambrose, Myrna Bailey
HOUSE MANAGER	- - - - -	Jack Larkworthy

The program cover was designed by Don Walters.

31 Feb 14, 15, 1951